

11TH - 13TH OCTOBER 2024



WWW.MULLRALLY.ORG



#MUSTBEMULL
#MULLRALLY



Post No.	Miles		Information	Predicted Marshals
	Total	Inter		

Introduction

This setup guide is intended to show the main features required to set up the stage safely and in accordance with Motorsport UK requirements as set out in the Motorsport UK Yearbook 2024 (updated 1-03-24) sections 28 and 29, and in particular Stage Rally Safety Requirements (edition 6), the Mull Rally Safety Manual and any directions from senior officials of the event.

Junction numbers and warning arrows.

Every post unless immediately following another should have a warning arrow and junction number placed 100m (+/- 10m) before the post.

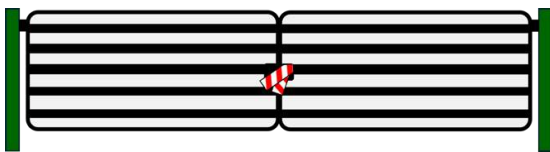
Gateways

All gateways, paths, tracks and access to the rally route should be clearly taped with red/white tape. Appropriate warning signs (As per Stage Rally Safety Requirements) should be positioned approaching the route.

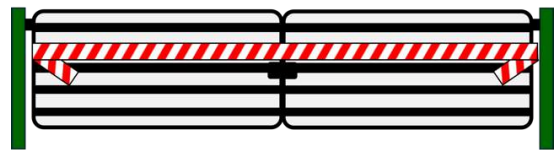
There may be more gates/paths/tracks that are not necessarily depicted in this setup book, but **all** will need the necessary signage and tape:-

Some taping examples:

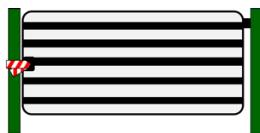
Double gate (Manual - tape around the lock)



Double gate (electric)



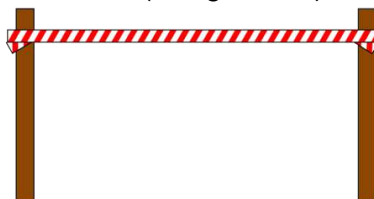
Single Gate (tape around the lock)



Gate piers

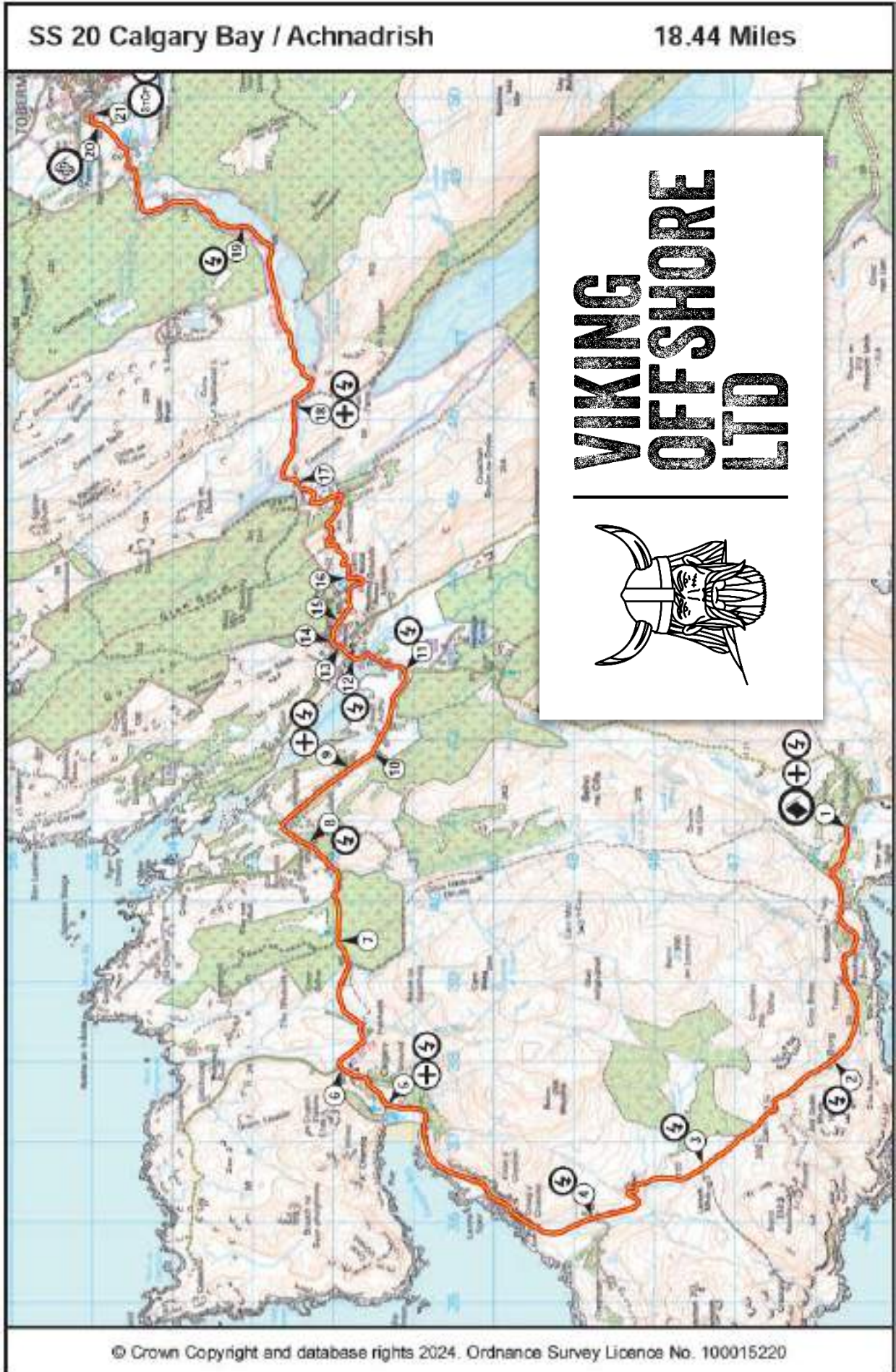


Track (using stakes)



All setup crews should consult the stage commander, if in doubt as to how the gate/track should be taped and which signs to use.

Post No.	Miles		Information	Predicted Marshals
	Total	Inter		



Post No.	Miles		Information	Predicted Marshals
	Total	Inter		

20		CALGARY BAY / ACHNADRISH			Stage Commander		Colin Christie	
		Deputy Stage Commander		Keith Cowan		Stage Safety Officer		Wilma Davidson
LOCATION DETAILS		LOCATION		WHAT 3 WORDS	MAP REFERENCE	MANDATORY	MARSHAL REQUIREMENTS	
POST	LOCATION	WHAT 3 WORDS	MAP REFERENCE	MANDATORY	PREDICTED MARSHALS			
ARRIVAL	Tortoise House	overlaid.exclusive.bottle	NM4104845538		2			
START LINE	Old Silage Pit	nags.remission.bravery	NM4091745619	MR	4			
Post 1A	Kilminian	archives.beanbag.weeknight	NM3970845669		2			
Post 1B	Tostary	cabbages.trumped.speared	NM3894145611		2			
Post 2	Burg	aside.deeds.restore	NM3792145939	MR	1			
Post 2A	Reudle	shortens.enacts.spring	NM3757946412		2			
Post 3	Larach Mhor	retina.enormous.desiring	NM3667747419	MR	1			
Post 4	Ensay crossroads	incorrect.split.sued	NM3602948780	MR	1			
Post 4A	Calgary Beach (Toilet)	validated.ethic.jigging	NM3736850889		2			
Post 5	Calgary Beach	buckling.shot.scariest	NM3744751338	MR	2			
Post 6	Sunipol	swims.entitles.damage	NM3791751881		2			
Post 7	Langamull	slimy.landscape.swordfish	NM3955351930		2			
Post 8	Penmore Mill	diplomats.system.overhead	NM4068052332	MR	1			
Post 9	Killoran	obligated.yours.dial	NM4157651880	MR	1			
Post 10	Tobar Beag	bullion.straws.unspoiled	NM4185551499		2			
Post 11	Hill Road Junction	sniff.lifted.brave	NM4285651110	MR	1			
Post 12	Chicane	verbs.downs.ducks	NM4303151785	MR	4			
Post 13	Bellachroy	hindered.proposes.hotspots	NM4314651937		2			
Post 14	Kilmore Terrace	lipstick.annotated.crisis	NM4321652041		2			
Post 15	Old Grave Yard	playoffs.shudders.witless	NM4367051770		2			
Post 16	Dervaig Hairpins	excavated.flipping.gates	NM4399851840		2			
Post 17	Loch Torr	stocky.headsets.arrives	NM4520652447		2			
Post 18	Fish Farm Loch Frisa	fabricate.shippers.indirect	NM4621052488	MR	1			
Post 19	Boat House	primary.blasted.sidelined	NM4837353119	MR	1			
Post 19A	Newdate	skid.shiver.tunnel	NM4925454546		2			
FLYING FINISH	Bakery Corner	lost.dragonfly.elated	NM4966154892		2			
STOP LINE	Corner before Glengorm X road	headache.foam.wimp	NM4983155011	MR	2			
				12	50			

Post No.	Miles		Information	Predicted Marshals
	Total	Inter		



			Torloisk junction – ///bluffing.vocals.counters	
--	--	--	--	--



Arrival			At driveway on R. Notice C and SC for any approaching pedestrians. Control warning board 50m before. ///overlaid.exclusive.bottle	PM 2
----------------	--	--	---	-------------



Post No.	Miles		Information	Predicted Marshals
	Total	Inter		

P1 	0.00	0.00	Start Park radio/rescue/recovery in driveway on R. ///nags.remission.bravery	PM 4
				

0.7	0.7	Tape driveway on R – notice C facing outwards. Tape field gate on L. ///cornering.scanty.poems	
-----	-----	---	--



Post No.	Miles		Information	Predicted Marshals
	Total	Inter		

P1A	0.78	0.08	Kilninian – Tape house gates and across parking areas on L and R. ///archives.beanbag.weeknight	PM 2
-----	------	------	---	-------------



	0.88	0.1	Tape steps and driveway on R – notice C facing up driveway. Tape second entrance on R (see arrow) ///populate.stilted.charts	
--	------	-----	---	--



Post No.	Miles		Information	Predicted Marshals
	Total	Inter		

	1.48	0.6	Tape driveway on R <i>///spires.diner.aimed</i>	
--	------	-----	--	--



P1B	1.56	0.08	Tostary - Tape driveway on R <i>///cabbages.trumped.speared</i>	PM 2
------------	------	------	---	-------------



Post No.	Miles		Information	Predicted Marshals
	Total	Inter		

	2.06	0.5	Tape 4 gateways/2 houses on R and 1 gateway/house on L. ///supplier.overlaid.awakening	
--	------	-----	--	--



P2 	2.33	0.27	Burg – Radio Park in in driveway on R 10m back. Radio board and arrows as shown. Warning arrow, radio ahead board 100m before. Tape gate on L ///aside.deeds.restore	PM 1
--	------	------	---	-------------

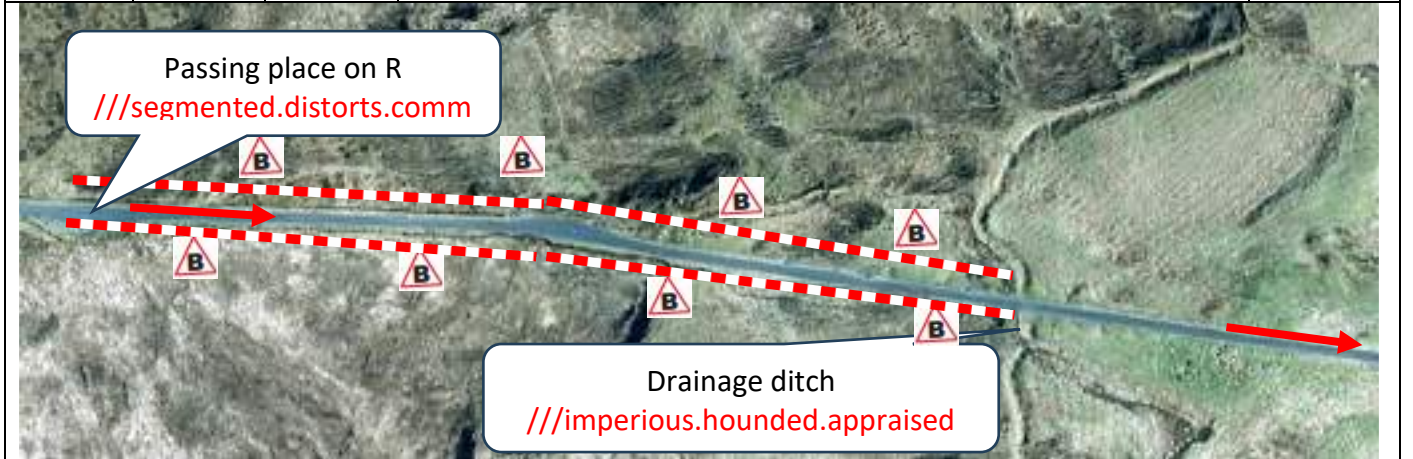


Post No.	Miles		Information	Predicted Marshals
	Total	Inter		


P2A	2.67	0.34	Reudle - Tape across opening and driveway. <i>///shortens.enacts.spring</i>	PM 2
-----	------	------	---	-------------

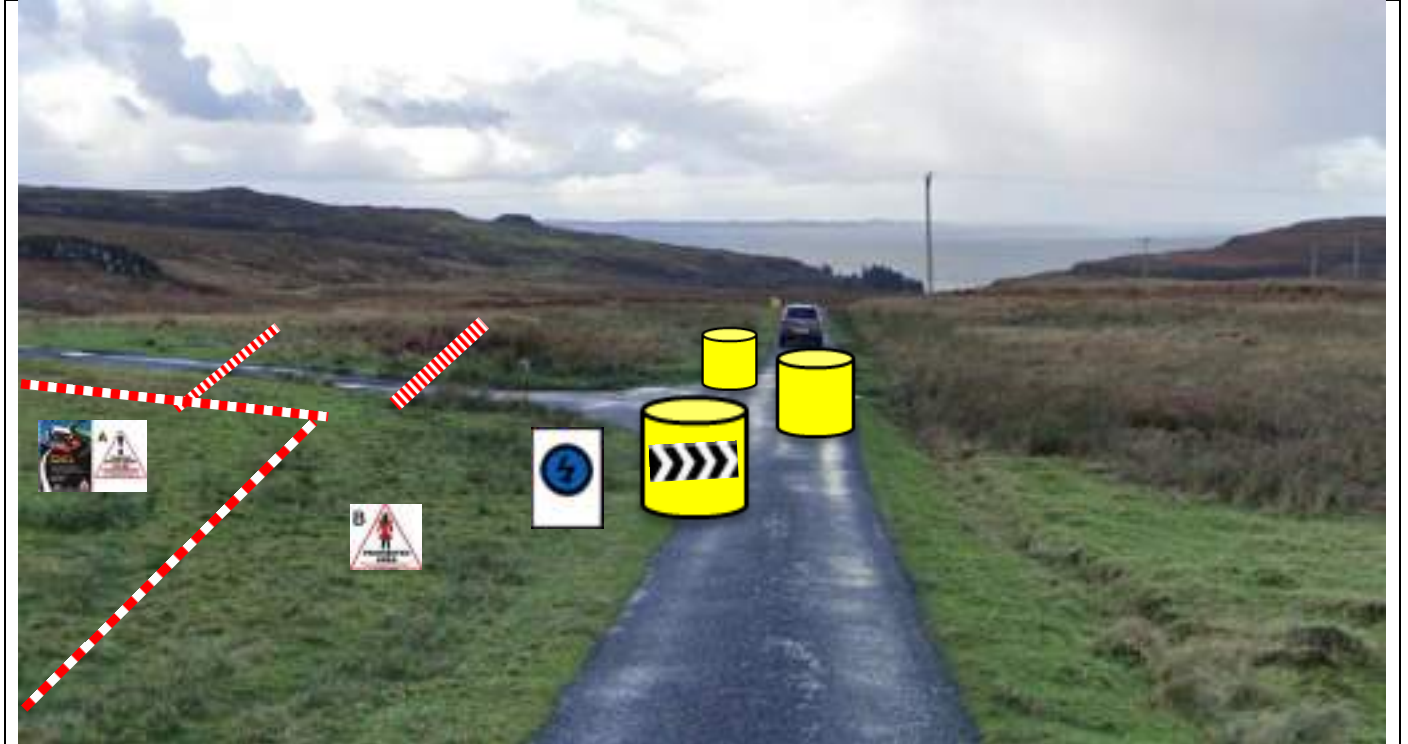


	3.31	0.64	Ensay Steps. Series of jumps. Tape approx 250m from approx <i>///segmented.distorts.common</i> to <i>///imperious.hounded.appraised</i> on both sides of the road. Post notice B at approx 30m intervals behind. Stakes required for R side – fence line can be used on L.	
--	------	------	---	--



Post No.	Miles		Information	Predicted Marshals
	Total	Inter		

P3 	3.56	0.25	Larach Mhor - Chicane - Mid-point radio 10m spacing of bales – enter R Vehicles to park to L at least 10m back from stage. Chicane board and radio warning 300m before with post no. Two countdown boards at 100m intervals. ///retina.enormous.desiring	PM 1
--	------	------	---	-------------



	4.56	1.0	Tape off parking area. Tape driveway 100m ahead on R (arrowed). ///cooked.solids.odds	
--	------	-----	---	--



Post No.	Miles		Information	Predicted Marshals
	Total	Inter		
P4  	4.74	0.18	Ensay – Mid point Rescue and Recovery – Triple tape road on L - Notice C behind tape facing outward. Tape drive on L Arrows and radio board – advance arrow and board 100m before. Park behind tape on L or in drive on R, 10m back. ///<i>incorrect.split.sued</i>	PM 1
				
	6.36	1.62	Calgary Beach Approach – Tape gate on L, gate and 2 driveways on R and gate on L ///<i>pounces.snail.bulges</i>	
				


Post No.	Miles		Information	Predicted Marshals
	Total	Inter		

	6.48	0.12	Tape L side of road across passing place, camp site entrance and bus turning circle. Tape 10m inside campsite with notice B in front. Tape parking area (cones/stakes required). Tape 3 house entrances on R. ///newsstand.impact.behind	
--	------	------	--	--



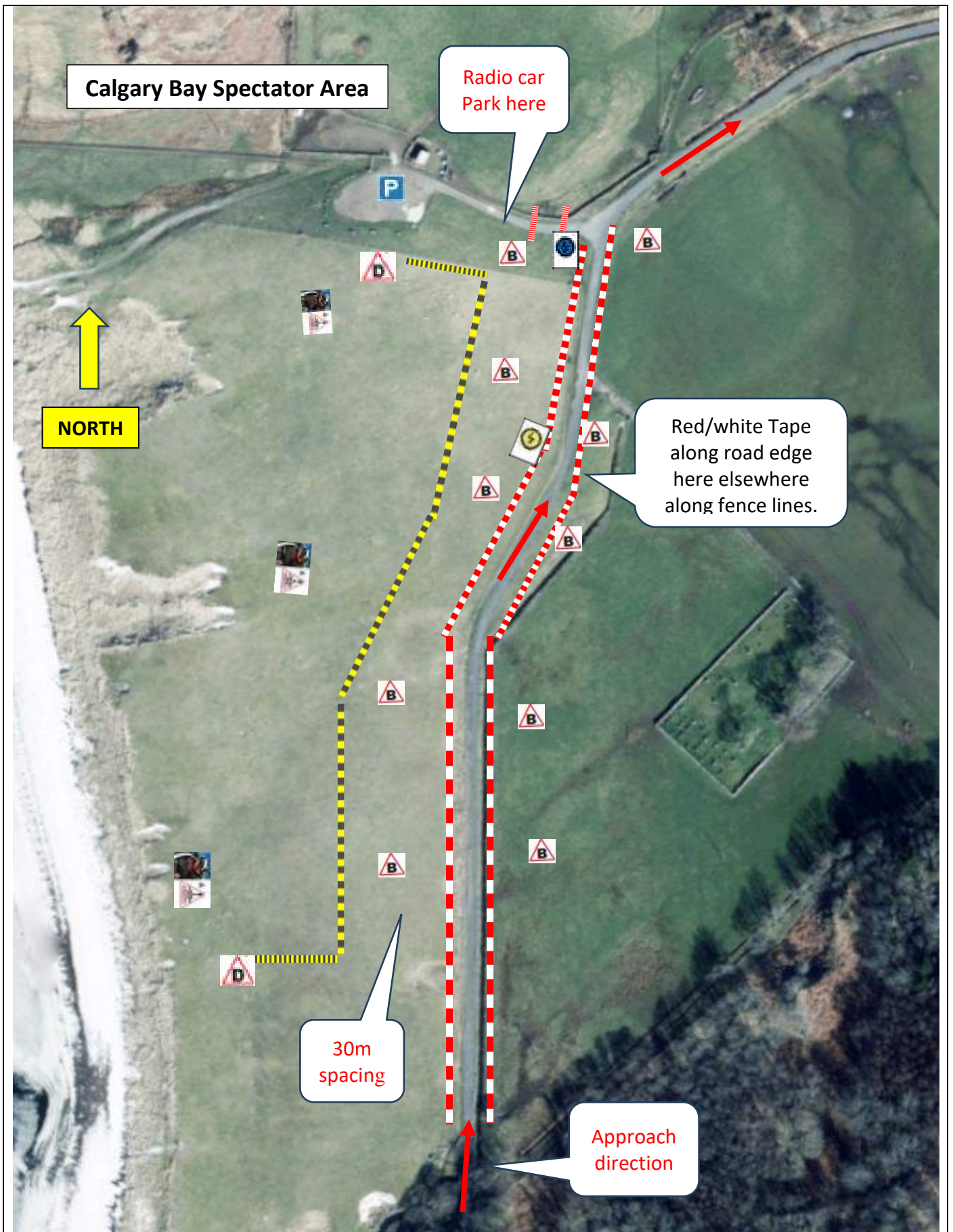
P4A	6.59	0.11	Tape off bus turning point and toilet entrance. Ensure spectators 20m back on high ground behind yellow/black tape to rear and 20m to R of toilet block. Notice B in front. Notice A and SC behind tape. Notice D at ends. Tape off bench seat. ///validated.ethic.jigging	PM 2
-----	------	------	--	------



Post No.	Miles		Information	Predicted Marshals
	Total	Inter		
P5 	6.91	0.32	<p>Calgary Beach- Mid-point radio. Park radio vehicle 10m back up road. Double tape entrance. See aerial view for spectator setup detail. Warning arrow, post no and radio ahead board 100m before.</p> <p>///buckling.shot.scariest</p>	PM 2



Post No.	Miles		Information	Predicted Marshals
	Total	Inter		



Post No.	Miles		Information	Predicted Marshals
	Total	Inter		

	7.21	0.3	Tape off driveway on on R and 7 other driveways through the Struan/Calgary village from ///crush.trespass.reclaim to ///overhear.careful.amounting	
--	------	-----	--	--



P6	7.4	0.19	Sunipol – Double tape road on L – notice C on approach. Notice B behind first tape. Warning arrow and post no 100m before. ///swims.entitles.damage	PM 2
-----------	-----	------	--	-------------



Beatsons Mull Rally 2024 - SS20 Viking Offshore Calgary Bay/Achnadrish Setup

Post No.	Miles		Information	Predicted Marshals
	Total	Inter		

	7.62	0.22	Tape off driveway on R ///streaking.twig.afford	
--	------	------	---	--



	7.73	0.11	Tape off driveway on R and field gate on L. ///entrusted.neatly.action	
--	------	------	--	--



Post No.	Miles		Information	Predicted Marshals
	Total	Inter		

	7.8	0.07	Tape off 2 gates at house on L and driveway on R (arrowed) ///revamping.masterful.webcams	
--	-----	------	---	--



	8.01	0.21	Tape shared driveway on R and field gate on L. Notice c in driveway. ///reserve.cuff.patching	
--	------	------	---	--



Post No.	Miles		Information	Predicted Marshals
	Total	Inter		

	8.33	0.32	Tape driveway on R – gateway on L and driveway 50m ahead on R (arrowed). ///pelted.ballparks.allowable	
--	------	------	--	--




P7	8.64	0.31	Langamull - Triple tape roads both L and R. Notice C and SC on approach both sides. Park in raised parking area on L. ///slimy.landscape.swordfish	PM 2
-----------	------	------	---	-------------



Post No.	Miles		Information	Predicted Marshals
	Total	Inter		



	9.18	0.54	Tape driveway on L. Notice C facing outward. ///corded.trickster.spells	
--	------	------	---	--



P8 	9.48	0.3	Penmore Mill - Radio – Triple tape road on L - Notice C behind tape facing outward. Arrows and radio board – advance arrow and board 100m before. Park behind tape on L 10m back. Tape all vehicle and other entrances to the restaurant car park on R and house on L and garden on R after junction. ///diplomats.system.overhead	PM 1
--	------	-----	--	-------------




Beatsons Mull Rally 2024 - SS20 Viking Offshore Calgary Bay/Achnadrish Setup

Post No.	Miles		Information	Predicted Marshals
	Total	Inter		
	9.68	0.2	Double tape outside of bend for visibility. Tape driveway on L just after bend. ///carriage.handicaps.spokes	
				
	9.98	0.3	Tape driveway on R. ///firebird.economics.cemented	
				

Post No.	Miles		Information	Predicted Marshals
	Total	Inter		

P9  	10.33	0.35	Killoran House Mid point Rescue and Recovery Tape off driveway on R – warning board and post no 100m before. Park in driveway 10m back. ///obligated.yours.dial	PM 1
				

P10	10.63	0.3	Tobar Beag Park in driveway on R. Notice C and SC facing along road. ///bullion.straws.unspoiled	PM 2
				

Post No.	Miles		Information	Predicted Marshals
	Total	Inter		

P11	11.32	0.69	Radio - Hill Road Junction Park in road on R 10m back. Double tape road. Warning arrow, radio board and junction number 100m before. ///sniff.lifted.brave	PM 1
-----	-------	------	--	-------------



	11.43	0.11	Tape driveway on R – Notice C facing out. ///quail.mistaking.wires	
--	-------	------	--	--



Post No.	Miles		Information	Predicted Marshals
	Total	Inter		

	11.48	0.05	Tape gateway on R ///orbit.tulip.processes	
--	-------	------	--	--

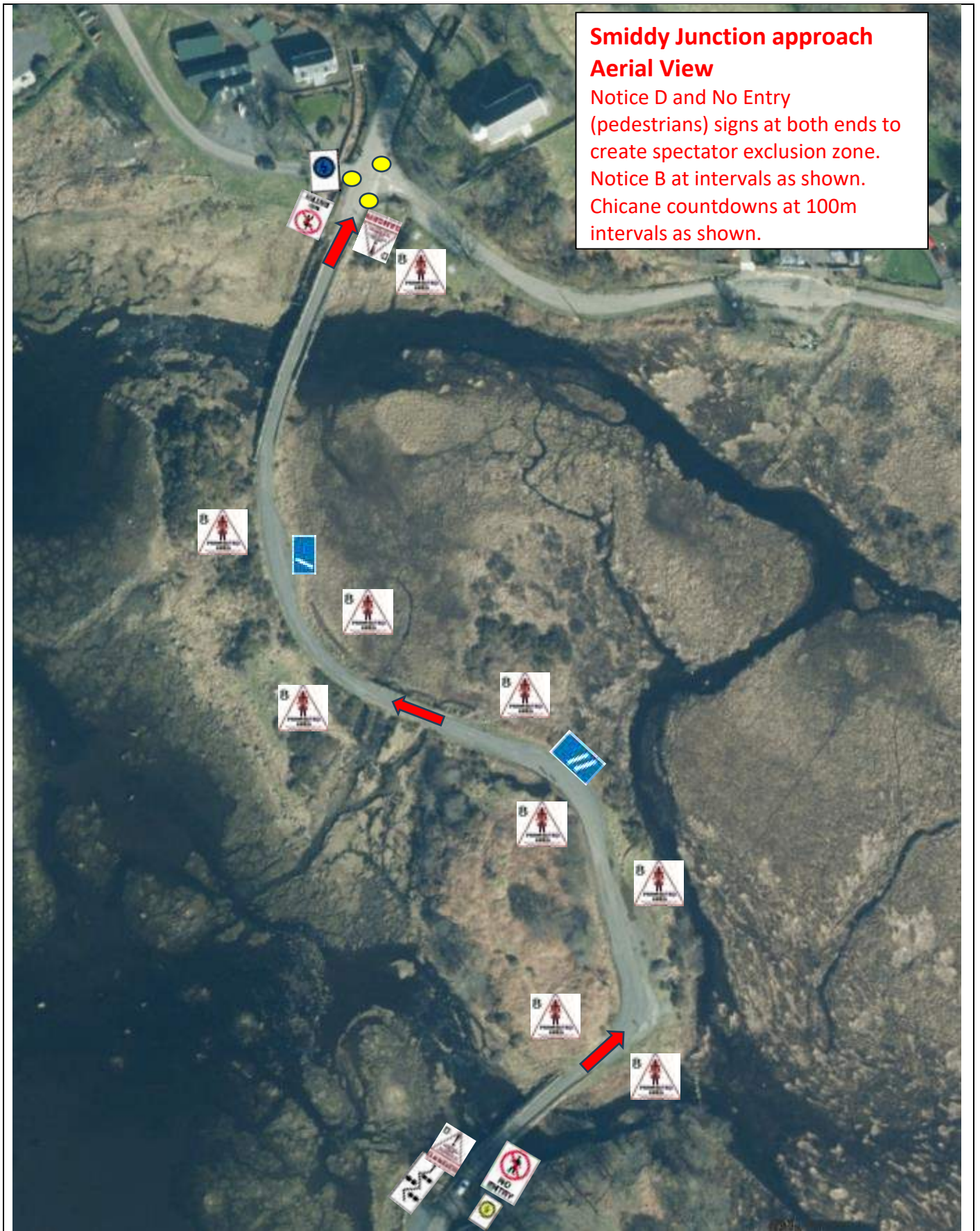


	11.53	0.05	Tape house frontage on R ///scooter collision.refers	
--	-------	------	--	--

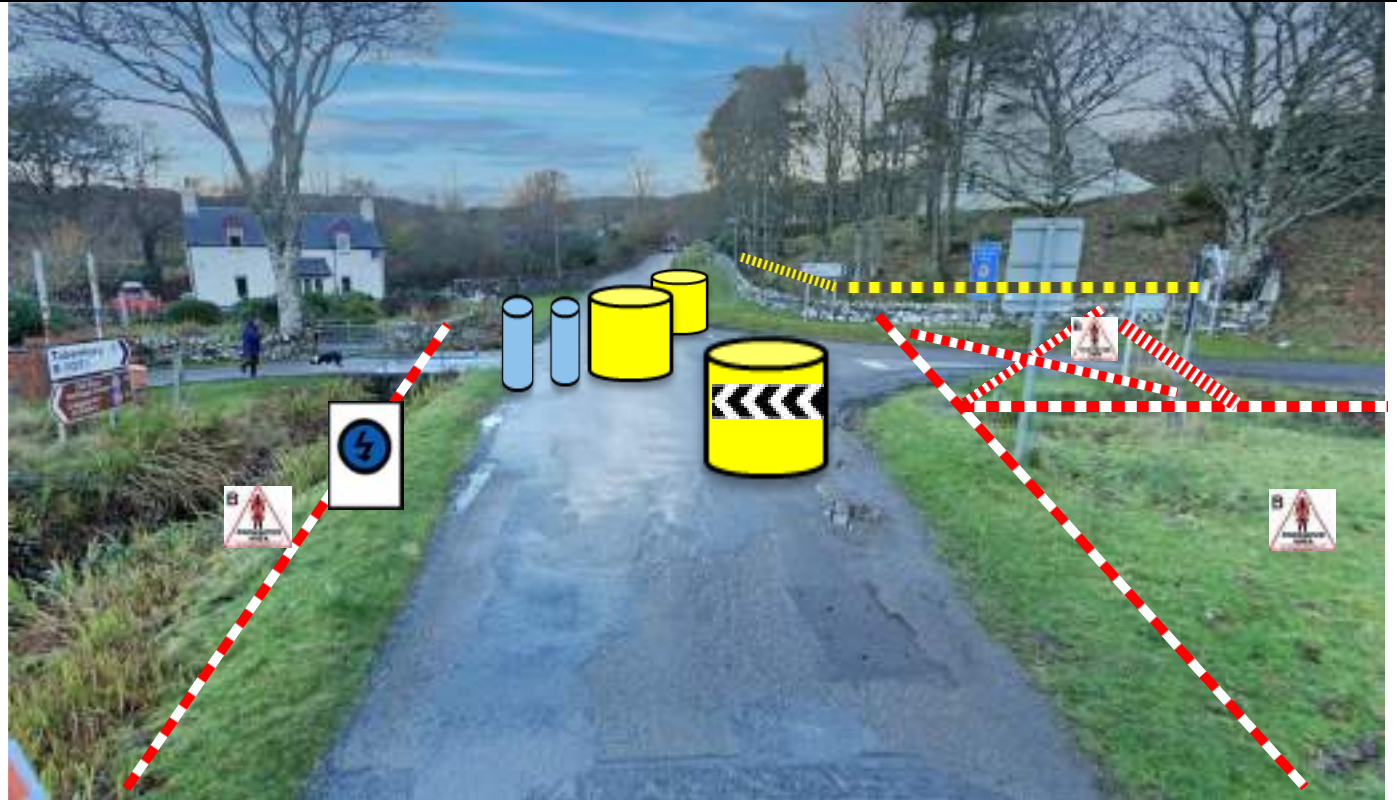


Post No.	Miles		Information	Predicted Marshals
	Total	Inter		
	11.61	0.08	Tape house gate on R ///emporium.shampoos.defected	
				
	11.64	0.03	Tape gate on R. Notice B and No Entry to Pedestrians signs at Armco to denote pedestrian exclusion zone. Other signs 3m before to ensure clearly visible to competitors. Chicane warning sign, post number and radio warning boards as shown. ///appoints.arranges.score	
				

Post No.	Miles		Information	Predicted Marshals
	Total	Inter		



Post No.	Miles		Information	Predicted Marshals
	Total	Inter		
P12	11.8	0.16	Radio and Chicane – Chicane Warning board 300m before with 2 countdown boards at 100m intervals. Box junction to R with Notice B. Spectator area in churchyard – tape behind wall as shown. Notice A and SC displayed in churchyard. Radio vehicle to park behind box junction to block road. ///beep.flute.library	PM 4



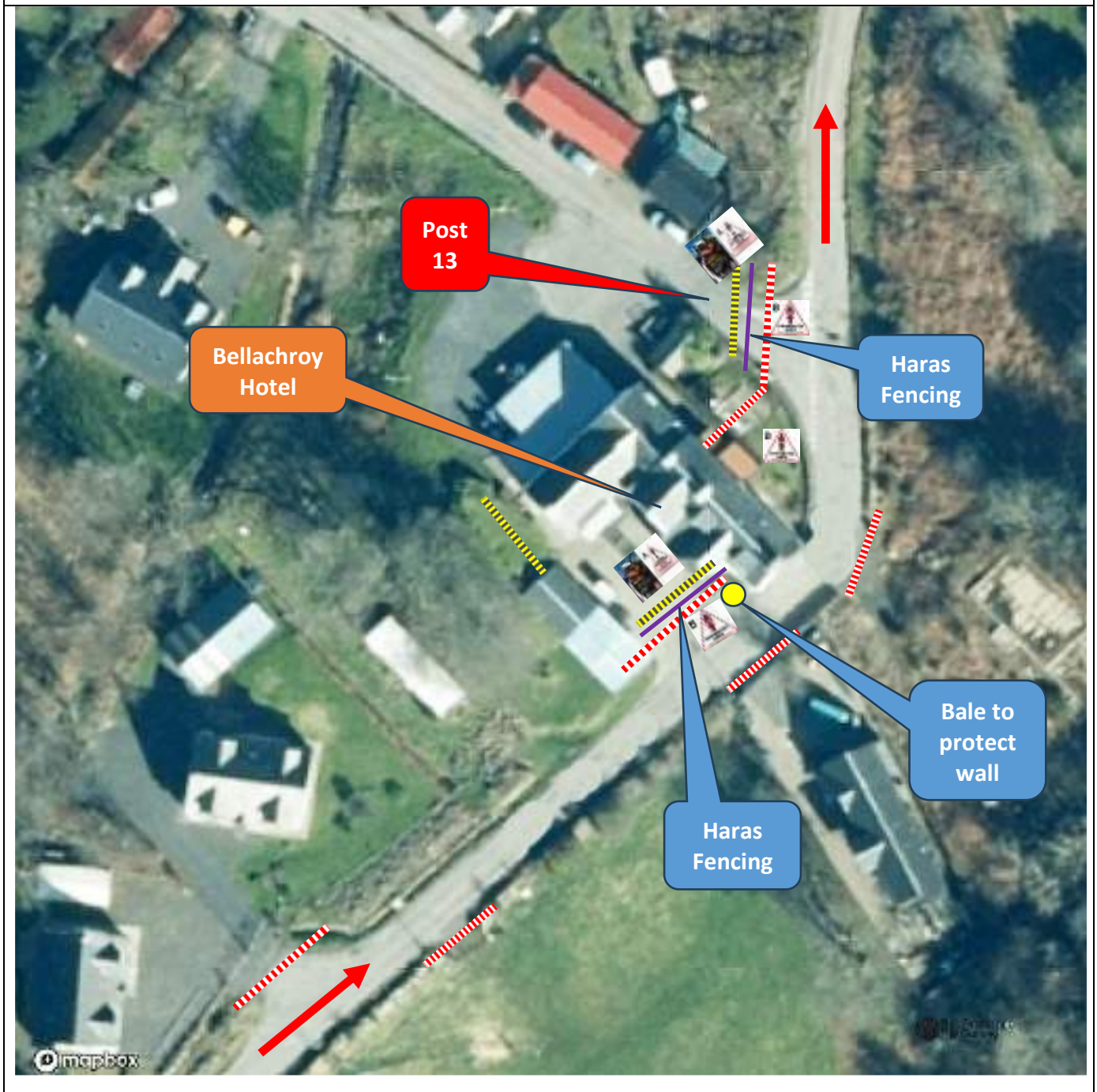
Dervaig Church Yellow/black tape detail

Notice B in front of yellow/black tape, in front of wall. Notice A and SC in spectator area. Red/white tape on stakes/sign poles in front of wall to exclude spectators from verge.



Post No.	Miles		Information	Predicted Marshals
	Total	Inter		

Dervaig - Overview of P13/Bellachroy Hotel area. Heras fencing used to keep spectators back in conjunction with tape as shown.



Post No.	Miles		Information	Predicted Marshals
	Total	Inter		

P13	11.92	0.11	Bellachroy Hotel Tape with Haras fencing behind, and yellow/black tape behind. Notice A and SC behind, notice B in front. ///hindered.proposes.hotspots	PM 2
-----	-------	------	---	------





	11.96	0.04	Hostel entrance. Tape as shown, continue across grass area 5m back. Notice B in front of tape.	
--	-------	------	---	--



Post No.	Miles		Information	Predicted Marshals
	Total	Inter		
P14	12.0	0.02	Kilmore Terrace Double tape – Notice B as shown. Notice C and SC on approach. Bale to protect hydrants and signpost. ///lipstick.annotated.crisis	PM 2



Beatsons Mull Rally 2024 - SS20 Viking Offshore Calgary Bay/Achnadrish Setup

Post No.	Miles		Information	Predicted Marshals
	Total	Inter		
	12.04	0.04	Tape driveway on R and gates on R ///uppermost.group.painter	
				
	12.21	0.17	Tape road on R. Notice C and SC facing out Tape gateway on right after house (not visible here) ///exacts.grandest.winning	
				

Post No.	Miles		Information	Predicted Marshals
	Total	Inter		

P15	12.41	0.2	<p>Kilmore Graveyard – tape 2 gates on R. Popular spectator point - Yellow/black tape 3m inside wall – red/white along verge with notice B. 2x Notice A and SC inside graveyard. ///playoffs.shudders.witless</p>	PM 2
-----	-------	-----	--	-------------



	12.45	0.04	<p>Tape off house on left from field gate before to vehicle gate after. ///reporters.plates.instead</p>	
--	-------	------	---	--



Post No.	Miles		Information	Predicted Marshals
	Total	Inter		

	12.54	0.09	Tape opening on L ///competing.slides.homeward	
--	-------	------	--	--



	12.66	0.12	Tape off gate on right and post notice Bs on outside of corner Tape off area on inside of hairpin from corner approx. 20m along each side and post notice B inside. ///fade.otter.musical	
--	-------	------	--	--



Post No.	Miles		Information	Predicted Marshals
	Total	Inter		

P16	12.78	0.12	Entrance taped off. Tape 10m back from road, notice B in front. Advance arrow 100m before with post number. Notice A and SC to be displayed ///excavated.flipping.gates	PM 2
-----	-------	------	--	------



	12.98	0.2	Tape off area inside and outside hairpin and post notice B ///prone.vessel.glitz	
--	-------	-----	--	--



Post No.	Miles		Information	Predicted Marshals
	Total	Inter		

	13.18	0.2	Tape off entrance to phone mast. ///music.rejected.perplexed	
--	-------	-----	--	--



	13.26	0.08	Gun Club Entrance Tape and notice B in front of gate Tape off area inside Hairpin and post notice B inside ///hydration.fame.flicked	
--	-------	------	---	--



Post No.	Miles		Information	Predicted Marshals
	Total	Inter		

	13.46	0.2	<p>Tape small quarry on left. ///fearfully.tornado.cassettes Tape inside of hairpin and post notice B inside and around outside of hairpin. ///warms.pixel.punt</p>	
--	-------	-----	---	--



	13.66	0.2	<p>Tape inside of hairpin and post notice B inside and around outside of hairpin. ///replaces.snowy.typified</p>	
--	-------	-----	--	--



Post No.	Miles		Information	Predicted Marshals
	Total	Inter		

	13.72	0.06	Tape inside of hairpin and post notice B inside Tape around outside of hairpin and post notice B ///keen.half.crinkled	
--	-------	------	---	--



	13.82	0.1	Achnadrish House Hotel Tape inside hairpin and outside of bend – notice B behind tape and in Hotel gateway. ///shrub.this.trainer Tape house entrance after bend ///optimists.swam.transmits	
--	-------	-----	---	--

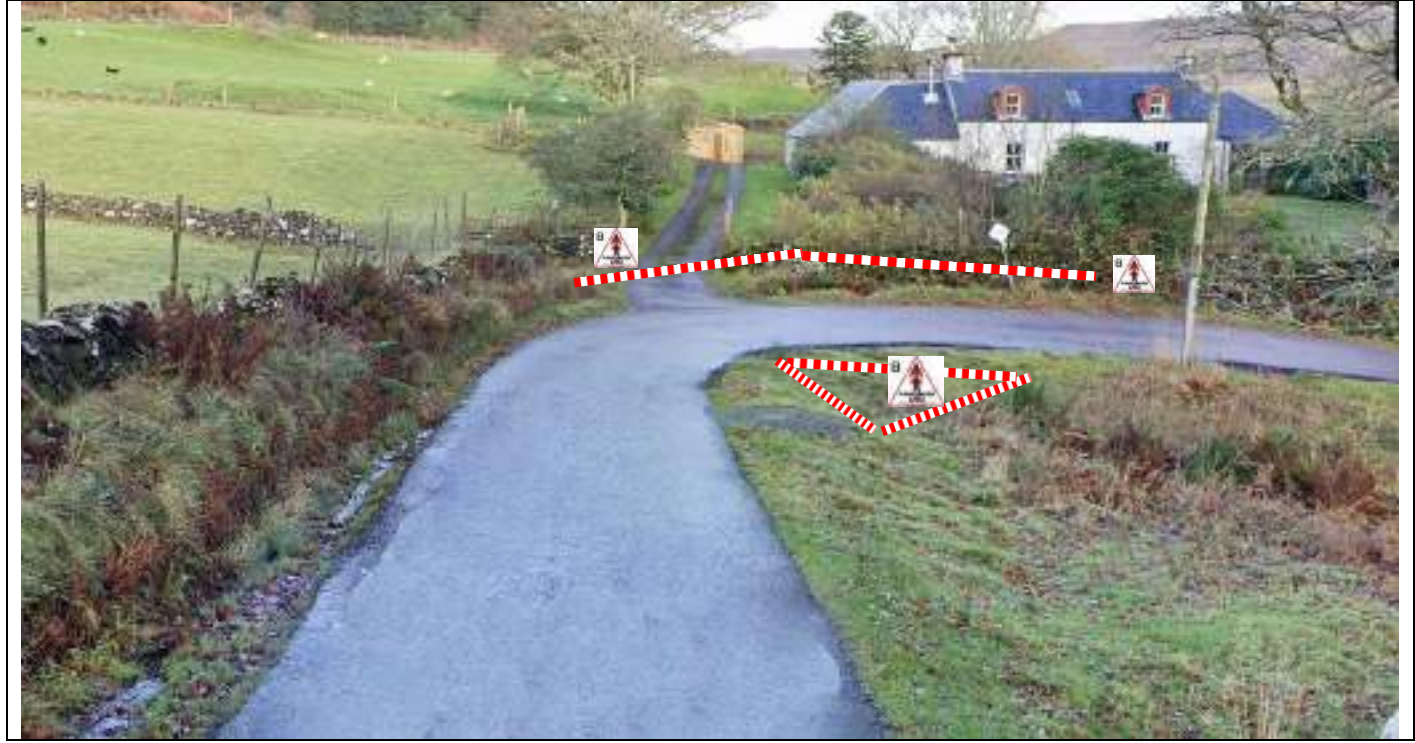




Post No.	Miles		Information	Predicted Marshals
	Total	Inter		

	14.02	0.2	Tape off gate on L ///boom.performed.emperor	
--	-------	-----	--	--



	14.06	0.04	Tape across track, around outside and inside of bend. Notice B as shown. ///plot.sweeping.jousting	
--	-------	------	---	--



Post No.	Miles		Information	Predicted Marshals
	Total	Inter		
	14.14	0.08	Tape entrances on L and R ///stopping.confusion.tinny	
				
P17	14.34	0.2	Loch Torr Marshal parked in forestry road on left, at least 30m from the stage. (track is below stage level) Road taped off. Notice C and SC facing along forestry road. Advance arrow 100m before with post number ///stocky.headsets.arrives	PM 2
				

Post No.	Miles		Information	Predicted Marshals
	Total	Inter		

	14.64	0.3	Tape off layby. ///snack.headers.magical	
--	-------	-----	--	--



P18 ⚡ ⊕	15.07	0.43	Fish Farm – Loch Frisa Radio/recovery/rescue park on Forest track on R. Tape tracks on R and L. Warning board, arrow and post no 100m before. ///fabricate.shippers.indirect	PM 1
----------------------	-------	------	--	-------------



Post No.	Miles		Information	Predicted Marshals
	Total	Inter		

	15.47	0.4	Tape track on L ///hotel.until.pheasants	
--	-------	-----	--	--



	15.57	0.1	Tape gate on L ///minimums.prevents.jaundice	
--	-------	-----	--	--



Post No.	Miles		Information	Predicted Marshals
	Total	Inter		

	16.07	0.5	Former Tumbledown House. Tape gates. ///rollover.hostels.young	
--	-------	-----	---	--



	16.27	0.2	Tape off gravel area on L. ///estimate.twee.warthog	
--	-------	-----	---	--



Post No.	Miles		Information	Predicted Marshals
	Total	Inter		
P19 	16.73	0.46	Boat House Radio board and arrows as shown – warning arrow and board 100m ahead. Tape opening on L – park well back.. ///primary.blasted.sidelined	PM 1
				
	17.13	0.4	Tape gate on R ///inferior.subplot.lin	
				

Beatsons Mull Rally 2024 - SS20 Viking Offshore Calgary Bay/Achnadrish Setup

Post No.	Miles		Information	Predicted Marshals
	Total	Inter		

	17.53	0.4	Tape opening on L ///ecologist.blurs.faces	
--	-------	-----	--	--



	17.63	0.1	Tape opening on L ///escapes.chilled.excellent	
--	-------	-----	--	--



Post No.	Miles		Information	Predicted Marshals
	Total	Inter		

	17.83	0.2	Tree Bend Tape inside of bend, with notice B. ///duos.backers.remarks	
--	-------	-----	---	--



	17.9	0.07	Tape around outside of bend. Notice B at intervals. Direct spectators to high ground above road on L. ///excellent.fillings.panels	
--	------	------	---	--



Beatsons Mull Rally 2024 - SS20 Viking Offshore Calgary Bay/Achnadrish Setup

Post No.	Miles		Information	Predicted Marshals
	Total	Inter		

	17.93	0.03	Tape quarry on L ///kickbacks.sweat.woes	
--	-------	------	--	--



Post No.	Miles		Information	Predicted Marshals
	Total	Inter		
P19A	18.13	0.2	Tobermory Campsite (Newdale) Red/white tape along fenceline as shown, notice B at intervals. ///floating.promising.pythons Second photo – tape gate on L, continue tape/signs as above on campsite side ///purse.muffin.things	PM 2



Beatsons Mull Rally 2024 - SS20 Viking Offshore Calgary Bay/Achnadrish Setup

Post No.	Miles		Information	Predicted Marshals
	Total	Inter		

	18.22	0.09	Tape track on R ///surpasses.appeal.singers	
--	-------	------	---	--



	18.25	0.03	Tape 2 driveways on L. Notice B on outside of bend ///harmonica.tulip.amps	
--	-------	------	---	--



Post No.	Miles		Information	Predicted Marshals
	Total	Inter		

	18.29	0.04	Tape entrance on R ///increases.weedy.acclaimed	
--	-------	------	---	--

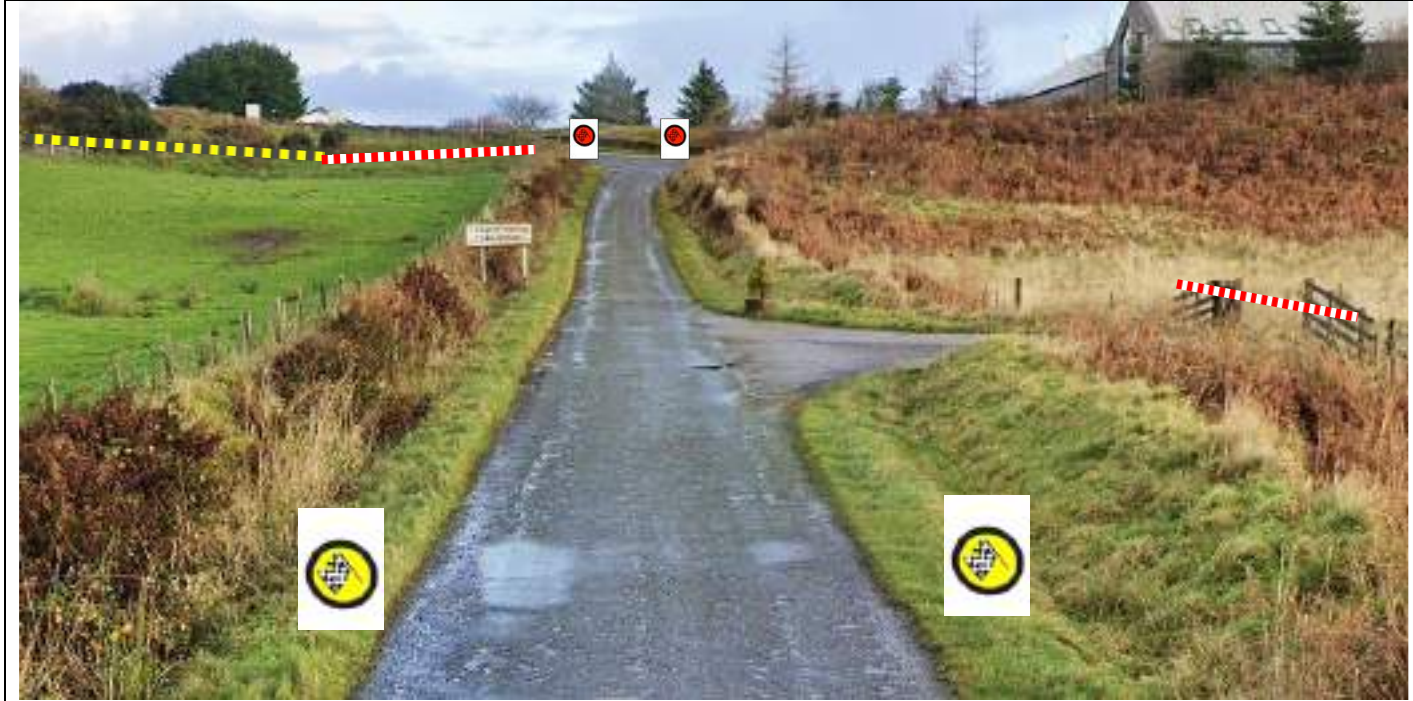


	18.31	0.02	Tape gate on L ///settle.retraced.upholding	
--	-------	------	---	--



Post No.	Miles		Information	Predicted Marshals
	Total	Inter		

	18.33	0.02	Tape gate on R. Flying finish warning boards and post no 20m before. ///outer.opened.minute	
--	-------	------	---	--

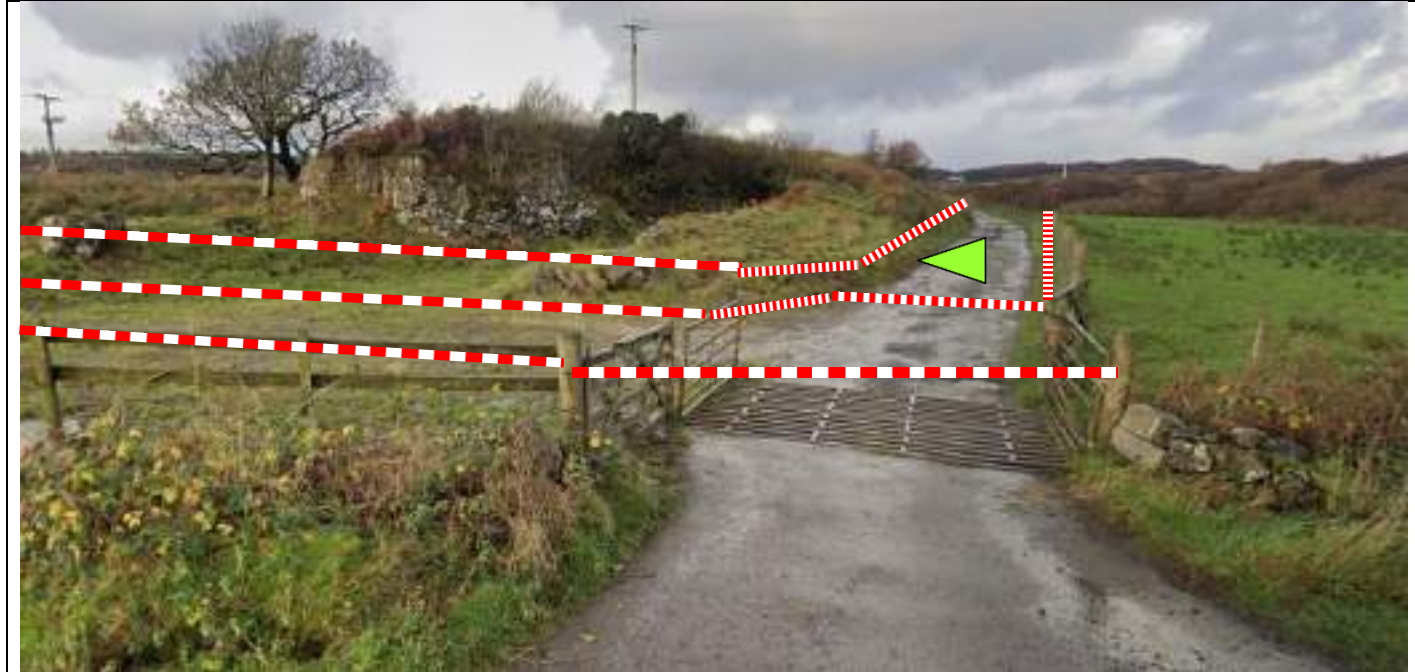




P20 	18.44	0.01	Flying Finish – (just after) Bakery Corner Timekeepers to park as indicated (possible need for 4x4). ///lost.dragonfly.elated	PM 2
---	-------	------	---	-------------



Post No.	Miles		Information	Predicted Marshals
	Total	Inter		

			Spectator Area Entrance See aerial view for full detail ///shorthand.enhanced.curable	PM 4
--	--	--	--	-------------



P21  	18.62	0.16	Stop Line – Corner before Glengorm X-roads Marshals and radio park in field entrance on R (or passing place 30m after). Countdown boards equidistant from FF location, ensure visible before corners ///headache.foam.wimp	PM 3
--	-------	------	---	-------------

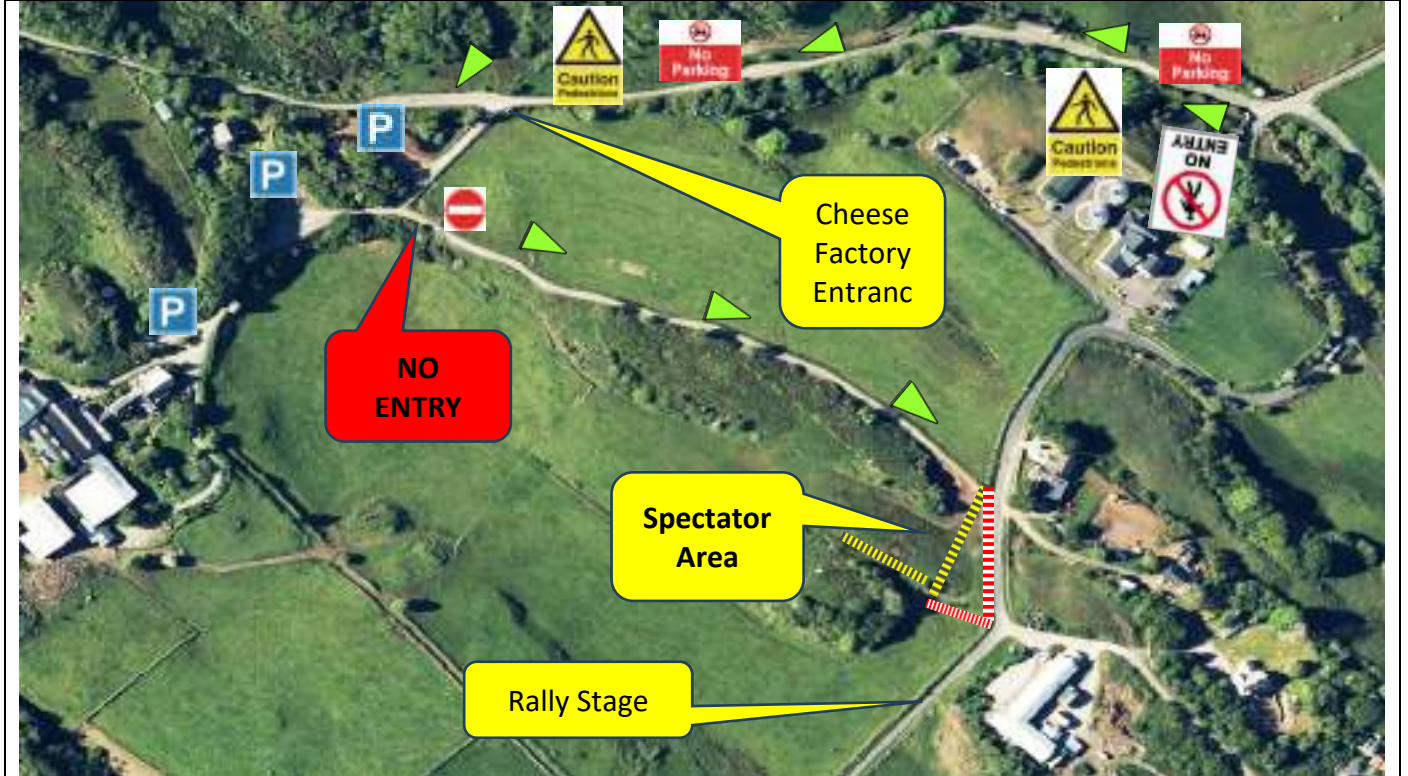


Post No.	Miles		Information	Predicted Marshals
	Total	Inter		

Exit			<p>Glengorm crossroads Road closed, notice D and no pedestrians sign on exit from stage. Spectator arrow, no parking and Caution pedestrian signs on Glengorm Castle road to access road to Cheese Factory ///providing.tender.yachting</p>	PM 1
------	--	--	---	------



Access route to spectator area from GlenGorm crossroads.
 Green arrows and Caution signs along the road to cheese factory turning from GlenGrom crossroads
 Parking in 3 areas as shown.
 Pedestrian access only down track to spectator area



Post No.	Miles		Information	Predicted Marshals
	Total	Inter		

P20A Spectator area detail. Delineate last 20m of approach track with white/red tape. Green direction arrows as shown

